

Areas Regulated for Emerald Ash Borer in Maine

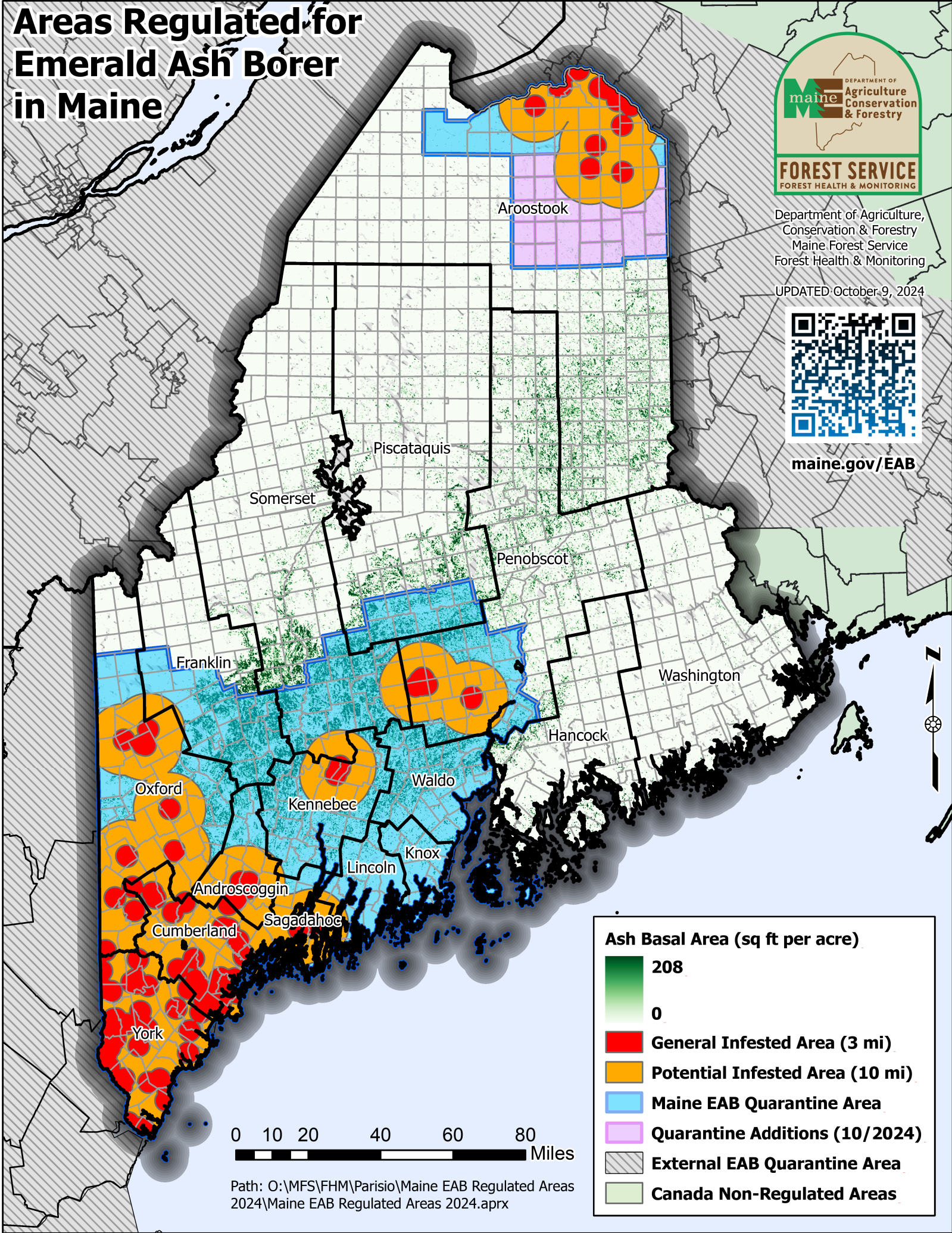


Department of Agriculture, Conservation & Forestry
Maine Forest Service
Forest Health & Monitoring

UPDATED October 9, 2024



maine.gov/EAB



Path: O:\MFS\FHM\Parisio\Maine EAB Regulated Areas 2024\Maine EAB Regulated Areas 2024.aprx

Ash Basal Area (sq ft per acre)

208

0

General Infested Area (3 mi)

Potential Infested Area (10 mi)

Maine EAB Quarantine Area

Quarantine Additions (10/2024)

External EAB Quarantine Area

Canada Non-Regulated Areas